



## Washing machine Type RIO-Vsmart

The washing machine Type RIO-VSmart is designed for cleaning metal containers by brushes and simultaneous spraying with solvent. Very good inside cleaning of cylindrical containers with a centrifugal folding brush. Conductive brushes with type examination according to ATEX, no nitrogen inerting required. –Explosion protection according to ATEX, category 1 (with type examination) for zone 0 inside, category 2 for zone 1 outside.

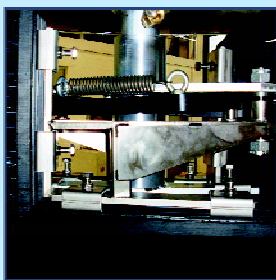
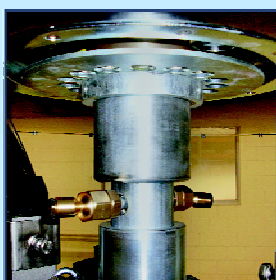
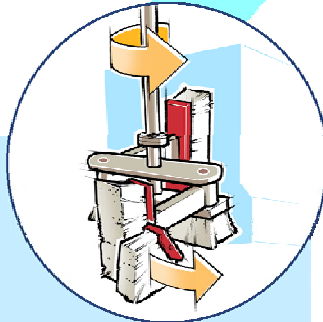
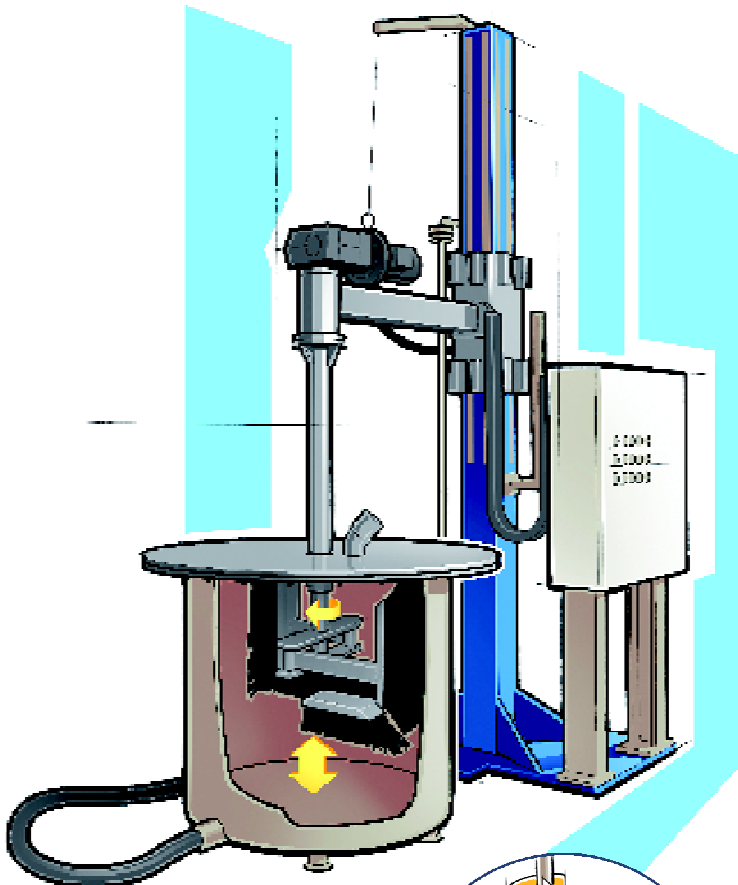
### Dimensions:

#### RIO-Vsmart size 1

Container diameter (inside):	600 - 1350 mm
Max. container diameter (outside):	1400 mm
Container height (inside):	700 - 1350 mm
Total height:	max. 1500 mm
Dimensions:	B 1800 x T 2750 x H 3935 mm
Required space:	B 2600 x T 4000 x H 4000 mm

#### RIO-Vsmart size 2

Container diameter (inside):	750 - 1500 mm
Max. container diameter (outside):	1550 mm
Container height (inside):	700 - 1350 mm
Total height:	max. 1500 mm
Dimensions:	B 1800 x T 2750 x H 3935 mm
Required space:	B 2600 x T 4000 x H 4000 mm



### Items to be washed



### cleaning process



### cleaning agents

